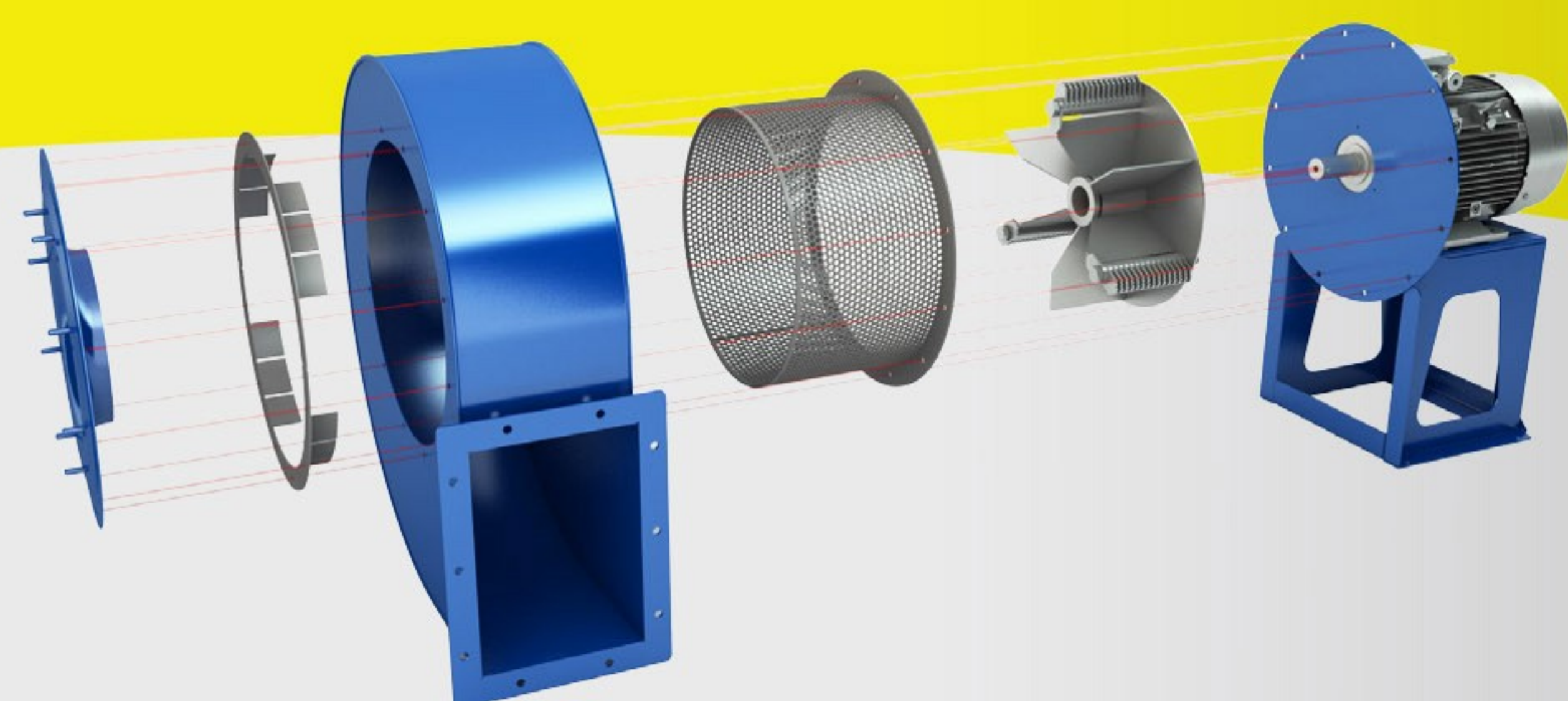


REFINERS



The refiners are used in case the suction of the product to be treated is required.

They reduce the volume of wood chips, plastics and other materials in briquetting or pelletizing processes.

Externally identical to centrifugal fans, they differ inside because an impeller is mounted with cemented oscillating hammers able to absorb the impacts, designed and thickened specifically according to the product to be treated.

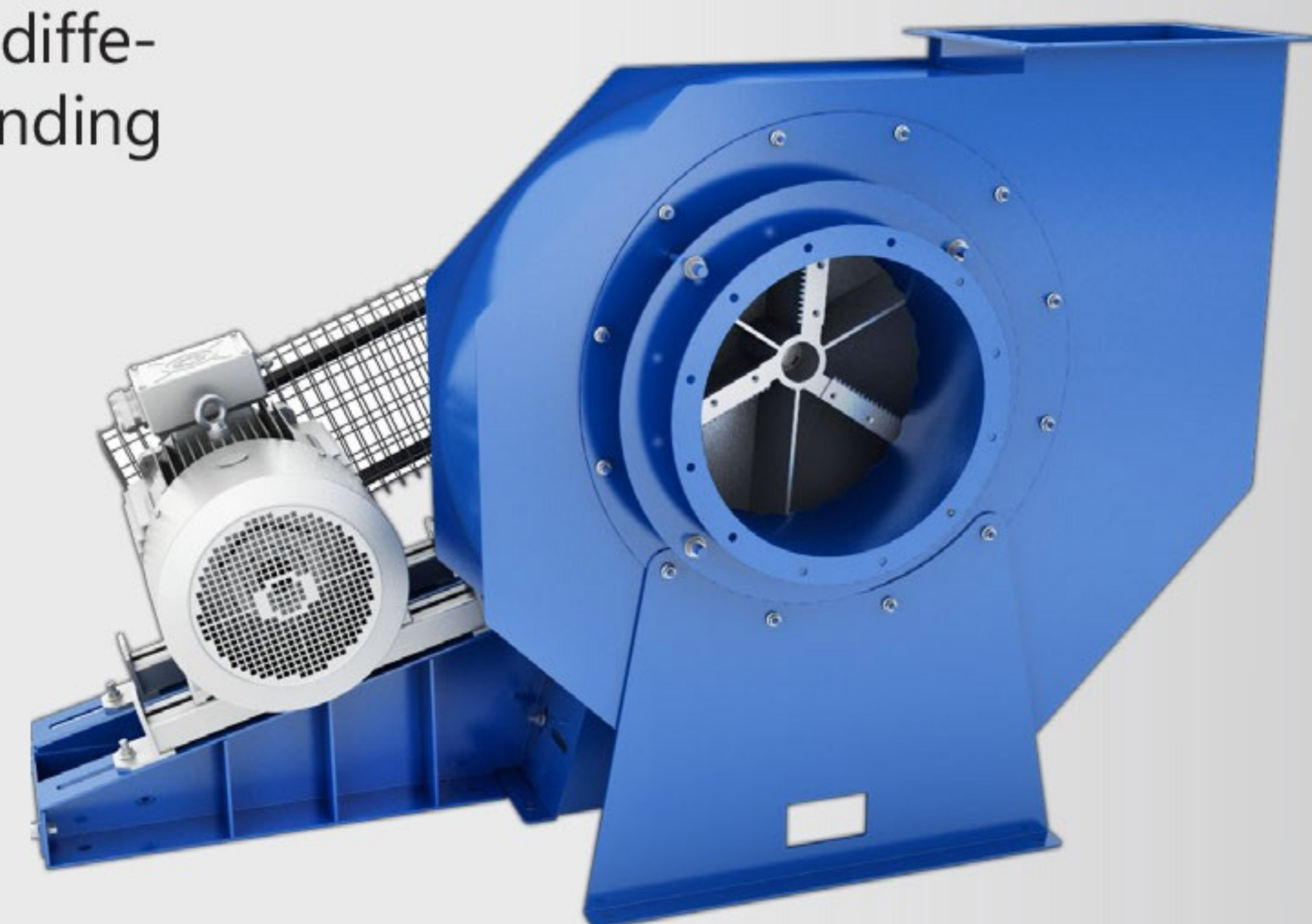
Furthermore, a circular net is mounted around the impeller, which can be easily removed and replaced, which acts as a screen, until the product has not reached the size of the hole in the net.

PAPER SHREDDER

The shrew fan is used in the paper production sector for the extraction of the coil trim that is shredded and conveyed to the pulper for the recycling of the same. It is also of fundamental importance in converting, used for the extraction and conveying of waste material at collection points and then recycled by paper mills.

The waste material, thanks to the knives installed on the girante, is shredded. The toothed air inlet mouthpiece is decentralized from the axle of the current and is adjustable to best adapt to the type of material and to control the size of the scraps.

There are several models and fan sizes with different engines depending on the amount of air and scrap to be treated.



ROTARY VALVES



The IST series valves are made of sheet metal of steel welded and subsequently galvanized. These valves are provided of rotors with trated rubber blades easy to replace, which can be optionally supplied also in vulcollan if you need to dose hot products.

The valves are supplied with gearmotor or if you need to change the moving laps also with motovariator-gear reducers or motoinverter.

The IST valves are suitable for transporting materials nad waste, all types with the exclusion of abrasive ones and/or corrosive.

The IST valves can be built in the most different materials and with surface treatments specific to the applications you need.

These valves are built by modular sides which leaves the width unchanged, allows you to customize the length of the specific measures (you will have a infinite range of measurements and flow rates).

*Reliability and quality,
the typical features of Italsime products*



The ITALSIME organization is mainly aimed at satisfying the needs of:

- *Manufacturers of suction and pneumatic conveying systems in general*
- *Manufacturers of machinery for the wood, glass, metalworking and textile industries*
- *Resellers of technical items in general*